

# Label design & print software





Works with Windows printers



Native language printing



### ALsoft

Professional Label Software for Any Label Printer

ALsoft offers all the features you would expect from a professional labelling package including database integration, copy fitting, variable graphics, serial numbers and industry standard linear and 2D barcode symbologies.

Label production often requires formatting of input data. ALsoft has comprehensive facilities for handling data including keyboard data entry, and pre-set option lists. Where more complicated processing is required the macro script feature provides all that a professional user needs for custom data manipulation.

ALsoft is compatible with all Windows operating systems from Windows XP to Windows 8.1, while its use of Windows print drivers allows it to run virtually any industrial label printer (or mixture of label printers), including such brands as Zebra, Sato, Toshiba and Datamax to name but a few.

### ALsoft Direct

Professional Label Software for SATO & ZEBRA

ALsoft DIRECT communicates with the printer in its native language, removing the need for a Windows print driver, and therefore, simplifying and speeding up the process of designing and printing professional quality labels, whilst still offering the key features of the ALsoft programme.

Because it's written exclusively for SATO and Zebra printer ranges, ALsoft DIRECT offers direct control over all of the printers features and settings, with accurate screen representations of printer fonts, making it the first 100% WYSIWYG labelling application – a must for accurate positioning of label text & graphics, right first time.

By removing the need to match the settings of the print driver to the design software, a simpler user interface is used, removing many potential support issues of label software/driver mismatch.

### Key Features

ALsoft & ALsoft Direct (continues overleaf)

Fully functional Windows application providing graphics-based label design and separate print interface, ensuring no unauthorised alterations of labels.

### Label Design

Drag & Drop and sizing with mouse. Grid and Guide line control for accurate layout. Full control with mouse, arrows or value entry. Layering with move elements to front/back. Settings for inverse, negative or backwards print. Group alignment & properties tools. Undo/Redo multiple levels. Customised print time prompts. Export/import of templates and associated files. Automatic addition of prefix/suffix. Metric or Imperial ruler & measurement settings. Ribbon & label colour options. Settings for max/min length, truncation and padding. Settings for constraints and coercion. Preferences setting - font, barcode, sizes etc. Optional display of pre-printed label background.



Left to right: ALsoft design features, ALsoft DIRECT screen to print example & competitor screen to print example

### Text

Automatic copy-fit and left, centre, right justification. Rich text with rules based control with Macro Scripting. Currency, Weight and numeric data types. Control of no of decimal places for pricing, sizing units. Automatic formatting of currency £,p,\$,¢ etc. for pricing. Automatic formatting of units kg,g,m,cm,lb,oz for sizing. Constraint control for data input, Uppercase etc.

### Variable Handling

Keyboard entry, incrementing numbers, serial numbering, date/time stamps, option lists and macro scripts.

### Graphics

Lines, boxes and pictures of all graphic formats. Integrity of graphic maintained even when resized. Various algorithm choices for rendering to monochrome (ALsoft DIRECT only). Library of industry appropriate, scalable truetype symbols. Graphics or Symbol can be chosen from database field.

### Barcodes

All common symbologies including 2D. Uses printer generated barcodes for accuracy. GS1 UCC/EAN Wizard for application identifier generation. Automatic check digit calculation. Macro Scripting for non standard check digits etc. Human readable text options.

### Incrementing, Decrementing & Serialisation

Wide range of ranges and custom ranges. Options for limit reached etc. Start value from fixed, keyboard, other element or database. Next serial number memorised for next run.

### Option Lists

Choose predefined options at print time. Options chosen can cause print of an associated. Print Time Processing Basic like, Macro Script language to control label variables. Real time calculations for currency, weight etc. Linking and concatenation of label variables.

### Date & Time

Wide range of formats available. Custom formats. Date/Time offsets from keyboard or database or calculated.

### Database

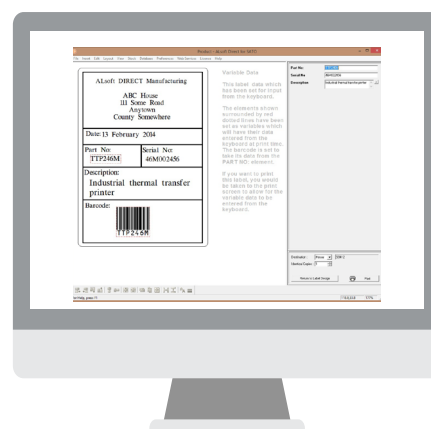
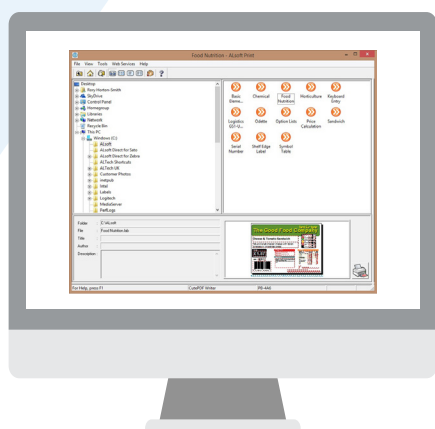
Wizard for easy connection. Multiple database types and OLEDB & ODBC for all others. Connection to spreadsheets or text files (csv etc). SQL queries and sophisticated filter control. Create predefined filters or sql queries for print time. Selection of individual record or groups at print time. Copy quantity control from database fields.

### Networking

No limitations or licence restrictions on use across a network. Printer can be local or network remote. Label templates & database can be remote.

### Print Only Version

Ideal for shop floor label selection. Independent print only function to prevent unauthorised input of data.



Left to right: ALsoft print only interface, ALsoft nutritional label & ALsoft DIRECT product label

## ALware Middleware Integration Software & Customer Front End Solutions

ALware is the generic name we give to our middleware and customer front end software solutions to integrate our print and apply machines (or desktop print systems) with your host control systems such as SAP, JD Edwards, Oracle and AS400 etc.

ALware solutions are developed and supported in-house by our talented development team for complete integration into your existing hardware and software infrastructure.

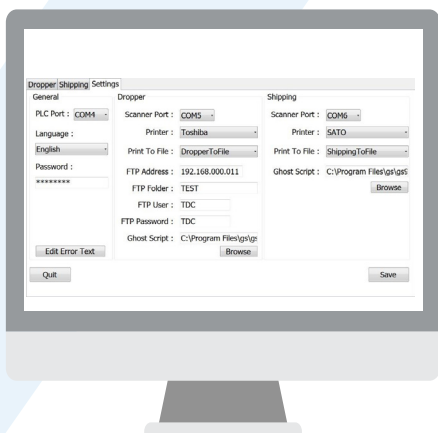
We have a range of proven software module solutions to complete a wide range of the most common middleware labelling requirements.

Examples include:

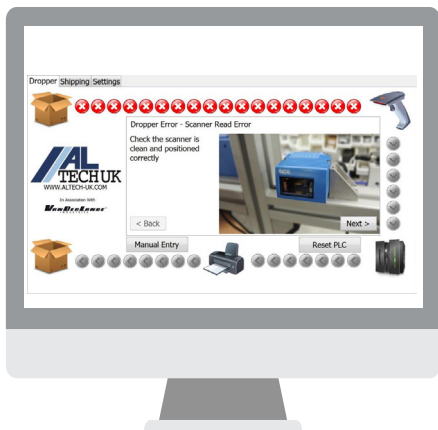
- Real time identification of the product with changing print data even running at high speed (e.g. postal shipping labels, variable price point labels, pallet labels)
- Automatic download of label print data for connected production processes with integrated barcode data checking
- Real time document printing solutions; for advice notes, picking lists, invoices etc
- Sequential or serial number labelling; for license plate tracking labels etc

Key to all ALware applications is user interface simplicity. Most solutions include a visual representation of the complete process cycle, editable help text to enable the inclusion of specific keywords for your business (or alternate language variations) and step by step help systems with in situ photographs of problem resolutions.

All these programmes can of course be adapted and extended according to your requirements. Please contact us to discuss your exact needs.



ALware settings



ALware printer error

